



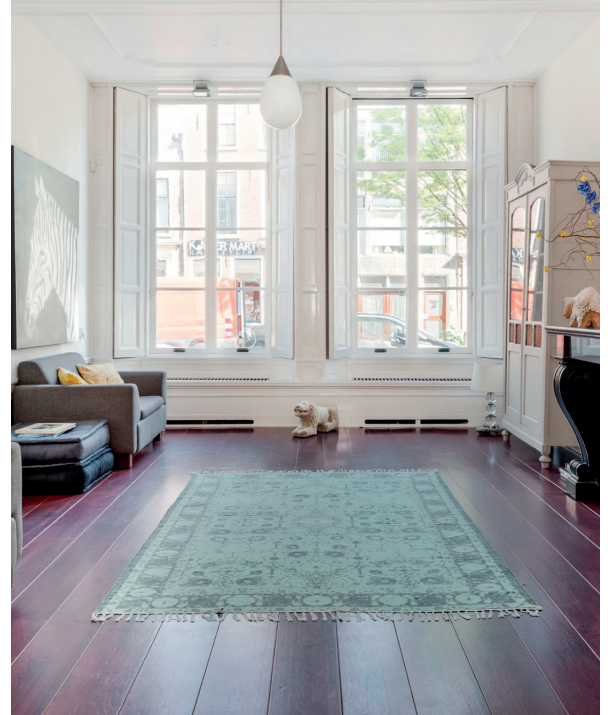
FINEO is much more than glass technology: it is pure comfort. This groundbreaking vacuum insulating glass not only delivers amazing energy performance, it also combines exceptional thermal insulation with unprecedented durability.

This thin vacuum insulating glass is elegant and sleek.

The Solar Control range ensures a comfortable indoor temperature all year round. Suitable for south-facing facades and large glazed areas, it helps to retain heat during the winter months yet is cooler in summer.

FINEO insulates as effectively as triple glazing but is lighter and thinner, meaning it can be installed into existing window frames. This often makes FINEO the most economical solution for renovation and restoration projects.

FINEO is a sustainable investment as it is 100% recyclable. It also has a long life expectancy any without any loss of performance.



What's so special about it?	What does it mean for you?
Slim, sleek and aesthetical design	<ul style="list-style-type: none"> ▪ An appearance similar to monolithic glass ▪ No vacuum evacuation port ▪ 20 mm grid micro-pillars^(*) ▪ Suitable for retrofitting^(*) into existing windows
Outstanding thermal insulation	<ul style="list-style-type: none"> ▪ U-value = 0,7 W/(m2.K) ▪ Regardless of the inclination (e.g. sloped or roof glazing)
Sustainable investment	<ul style="list-style-type: none"> ▪ Designed to perform for several decades
More natural daylight	<ul style="list-style-type: none"> ▪ Slim design providing more light comfort inside
Superior solar control	<ul style="list-style-type: none"> ▪ High performance solar control coating ▪ Lower solar heat transmission
Better noise reduction	<ul style="list-style-type: none"> ▪ Increased soundproofing ▪ Reduced traffic noise
Lead-free and recyclable	<ul style="list-style-type: none"> ▪ 100% Recyclable ▪ Circular sustainability

(*) retrofitting: replace the existing glass with a FINEO glazing, fully preserving the initial window frame (provided the frame is in good condition).


General questions, product information, sales-related inquiries and quotations:
www.fineo-vacuum-glazing.co.uk

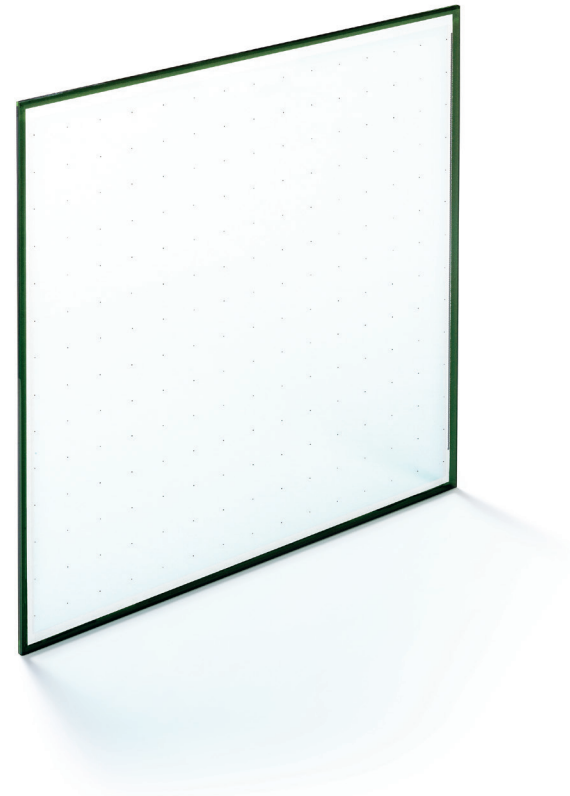
LESS IS MORE

LIGHT AND ENERGY PERFORMANCE⁽²⁾

	Total thickness [mm]	EN 410				EN 673
		LT [%]	LR ext [%]	LR int [%]	g [-]	U _g [W/(m ² .K)]
FINEO 8 SC 73/39	7.7	73	15	16	0.41	0.7
FINEO 10 SC 73/39	9.7	73	15	16	0.40	
FINEO 12 SC 73/39	11.7	72	15	16	0.40	

ACOUSTIC PERFORMANCE⁽³⁾

	EN ISO 10140	
	R _w [C;Ctr] [dB]	R _w +Ctr [dB]
FINEO 8 SC 73/39	35 (-2;-5)	30
FINEO 10 SC 73/39	36 (-2;-3)	33
FINEO 12 SC 73/39	36 (-1;-2)	34



TECHNICAL FEASIBILITY

Dimensions	Maximum ⁽⁴⁾	1.5m x 2.5m or 1.6m x 2.4m
	Minimum	0.2m x 0.2m
Shapes	Available in an important number of shapes	
Laminated safety glass	Available	

- (1) Missing or misplaced micro-pillars can occur. These misplaced or missing micro-pillars do not jeopardize the aesthetics (under normal observation conditions), the function, the performances nor the mechanical integrity over time of FINEO.
- (2) These data are calculated using spectral measurements compliant with standards EN 410 and ISO 9050 (1990). The U_{glass}-value is calculated according to standard EN 673. Emissivity is measured as per standards EN 673 (Annex A) and EN 12898.
- (3) These sound reduction indexes correspond to a FINEO sample measuring 1.23m x 1.48m as per EN ISO 10140-3. The testing is carried out under laboratory conditions. In-situ performance may vary depending on the actual glazing dimensions, frame system, noise sources, etc.
- (4) The maximum dimensions depend on climatic conditions.

The information and data contained in this document are subject to change without notice.
For more information check our website www.fineoglass.eu